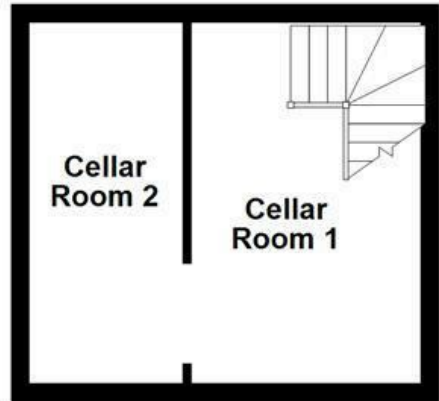
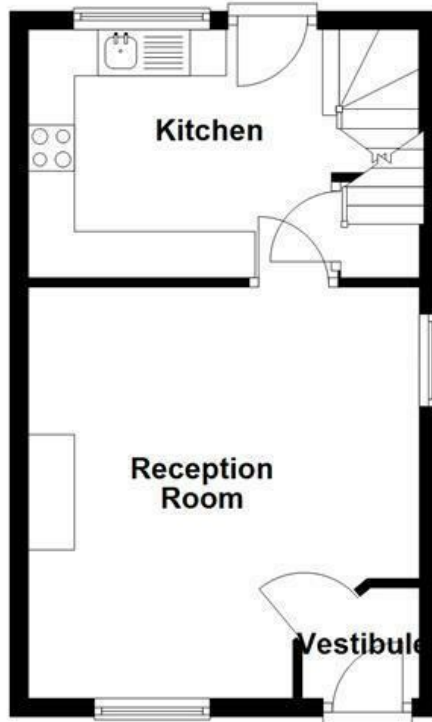


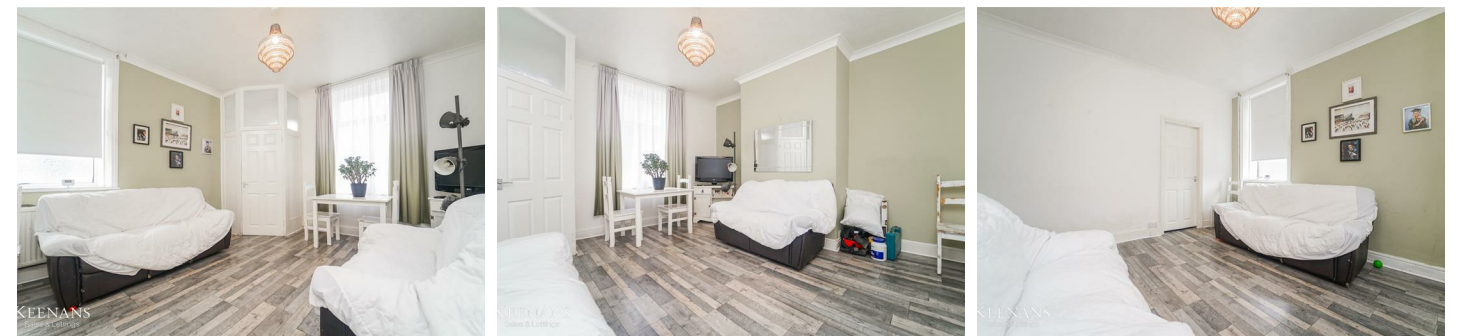
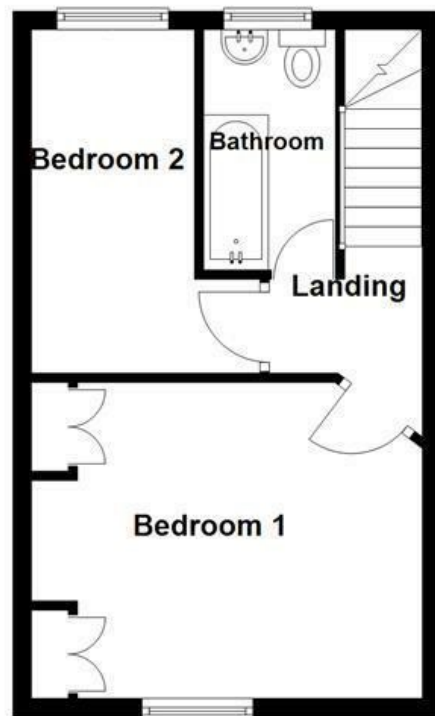
Lower Ground Floor



Ground Floor



First Floor



Energy Efficiency Rating		
	Current	Potential
Very energy efficient - lower running costs		
(92 plus) A		80
(81-91) B		
(69-80) C		
(55-68) D	67	
(39-54) E		
(21-38) F		
(1-20) G		
Not energy efficient - higher running costs		
England & Wales		
EU Directive 2002/91/EC		

These particulars, whilst believed to be accurate are set out as a general outline only for guidance and do not constitute any part of an offer or contract. Intending purchasers should not rely on them as statements of representation of fact, but must satisfy themselves by inspection or otherwise as to their accuracy. No person in this firms employment has the authority to make or give any representation or warranty in respect of the property.

Victoria Street, Whitworth, OL12 8PL

Offers Over £130,000

TWO BEDROOM END TERRACE IN WHITWORTH, ROCHDALE - PERFECT FOR A FIRST HOME OR INVESTMENT OPPORTUNITY

- Key Features:
- New Combi Boiler
 - New Electrical Consumer Unit
 - Double Glazing Throughout
 - Spacious and Well Maintained
 - Sought After Location
 - Ideal for Investment/Rental

Nestled on Victoria Street in the charming town of Whitworth, Rochdale, this delightful house presents an excellent opportunity for couples seeking their first home. The property boasts a generous reception room, providing ample space for relaxation and entertaining guests.

The kitchen, which overlooks the rear enclosed yard, is perfect for those who enjoy outdoor living. This private space features a shed, offering additional storage for tools or outdoor equipment.

Victoria Street, Whitworth, OL12 8PL

Offers Over £130,000

2

1

1

D

■ End Terraced Property

■ Fitted Kitchen

■ On Street Parking

■ EPC Rating: D

■ Two Bedrooms

■ Three Piece Bathroom

■ Tenure: Leasehold

■ Spacious Reception Room

■ Enclosed Rear Yard

■ Council Tax Band: A

Ground Floor

Vestibule

4'2 x 3'11 (1.27m x 1.19m)

UPVC double glazed entrance door, wood effect flooring and door to reception room.

Reception Room

14'7 x 13'11 (4.45m x 4.24m)

UPVC double glazed window, UPVC double glazed frosted window, coving, wood effect flooring and door to kitchen.

Kitchen

11'3 x 8'10 (3.43m x 2.69m)

UPVC double glazed window, wall and base units, laminate worktops, tiled splash backs, stainless steel sink with draining board and mixer tap, integrated oven, four ring gas hob, extractor hood, plumbing for dishwasher, space for fridge freezer, plumbing for washing machine, space for dryer, boiler, storage, tile effect flooring, stairs to first floor, door to stairs to lower ground floor and UPVC door to rear.

Lower Ground Floor

Cellar Room Two

Cellar Room One

Access to cellar room two.

First Floor

Landing

5' x 2'7 (1.52m x 0.79m)

UPVC double glazed window, loft access and doors to two bedrooms and bathroom.

Bedroom One

12'9 x 11'3 (3.89m x 3.43m)

UPVC double glazed window, central heating radiator and fitted storage.

Bedroom Two

12'4 x 6'1 (3.76m x 1.85m)

UPVC double glazed window and central heating radiator.

Bathroom

9'3 x 4'7 (2.82m x 1.40m)

UPVC double glazed frosted window, central heating radiator, dual flush WC, pedestal wash basin with traditional taps, panel bath with traditional tap and electric feed shower over, extractor fan, storage, part tiled elevations and wood effect flooring.

External

Rear

Enclosed yard, paving, storage shed and gated access to rear.

A modern kitchen with white upper and lower cabinets, a black countertop, and a black splashback. A white front-loading washing machine is integrated into the cabinetry. A stainless steel sink with a mixer tap and a four-ring gas hob are visible. A silver trash bin stands next to the washing machine. The floor is covered in dark, wood-effect tiles.

A bright reception room featuring a white UPVC double-glazed entrance door with a semi-circular transom. To the left, a white front-loading washing machine is built into the kitchen units. The room has white walls and a dark tiled floor.

A bedroom with a double bed covered in a pink and white striped duvet. A white TV stand with a flat-screen TV sits against the wall. A window with light-colored curtains is visible. The room has white walls and a light-colored carpet.

A bedroom with a double bed covered in a pink and white striped duvet. A white radiator is positioned against the wall. A small white bedside table with a lamp is next to the bed. The room has white walls and a light-colored carpet.

A bedroom with a double bed covered in a pink and white striped duvet. A window with light-colored curtains is visible. The room has white walls and a light-colored carpet.

A bathroom with a white bathtub, a white pedestal sink, and a white toilet. The walls are covered in white square tiles. A window with a white frame is above the sink. A small white storage unit is mounted on the wall.

A rear yard with a paved area, a storage shed, and a white front-loading washing machine. The yard is enclosed by a white fence. The floor is covered in dark, wood-effect tiles.

A rear yard with a paved area, a storage shed, and a white front-loading washing machine. The yard is enclosed by a white fence. The floor is covered in dark, wood-effect tiles.

Tel: 01706396140

www.keenans-estateagents.co.uk